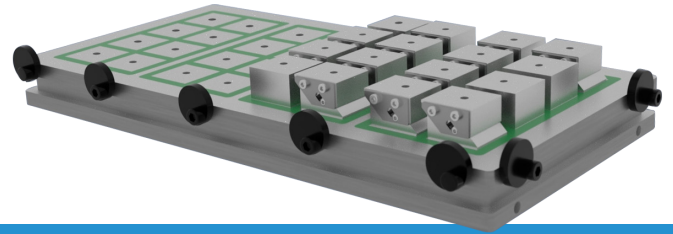


ACCESSORIES FOR MAGNETIC CHUCK MASTERMILL



POLE EXTENSIONS

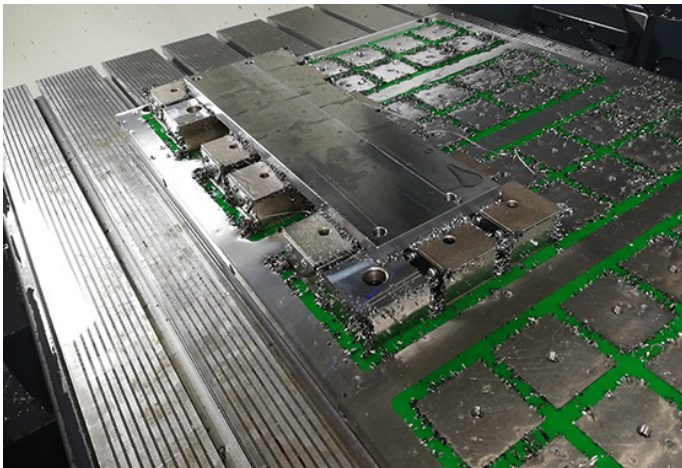
When to choose fixed pole extensions:

Fixed pole extensions allow machining from five sides for workpieces with good flatness. Another typical use is determination of a plane using the flexible pole extensions in the case of machining of irregular components.



When to choose flexible pole extensions:

You can use the flexible pole extensions to clamp components with uneven surfaces without deformation and a significant loss of holding force. You can machine the component from 5 sides in one operation. Flexible pole extensions adapt to the components shape, eliminate clamping stress and raise the component over the clamping area to allow machining from 5 sides in one setup.



Working principle of the pole extensions:

Pole extensions compensate the eventually unevennesses of the machined components. More complex components can be clamped in a stable and firm manner. This will also give you free access for 5 side machining or through drilling without risk of damage to the top plate of your magnetic chuck.

